

# Pcounter Web Pay

Real-time Pcounter account balance updates via electronic payment methods

**Pcounter Web Pay is an Internet based, secure, hosted ASP accounting solution enabling purchase of Pcounter print credit by credit or debit card from any web browser on a 24/7 basis. Fully customised to customer specifications, Pcounter Web Pay allows secure payments to be made from any Internet connected PC to a valid user account on the target network system. Three simple user interfaces allow ease of access for students/library users, cashiers and administrators.**

## KEY BENEFITS

- Easy integration with Pcounter, supports Windows and NetWare
- Centralised tracking and logging
- Secure payment method for Pcounter users
- 24/7 availability with instant account updates
- Works with any back-end financial service provider
- Works from any Internet connected PC worldwide
- Secure financial reporting
- Cost savings: save time processing transactions/handling cash
- Full audit trail on each transaction
- Low risk - high security

## KEY FEATURES

- Hosted browser based e-Payments service for Pcounter
- Transaction logging and financial reporting options
- Multicurrency support
- Supports custom payment modules for other services
- Instant account reloading
- 100% automated
- No cash, no administration
- Customisable interface
- Supports virtually all Internet-based payment methods
- High security

## Take control with Pcounter.

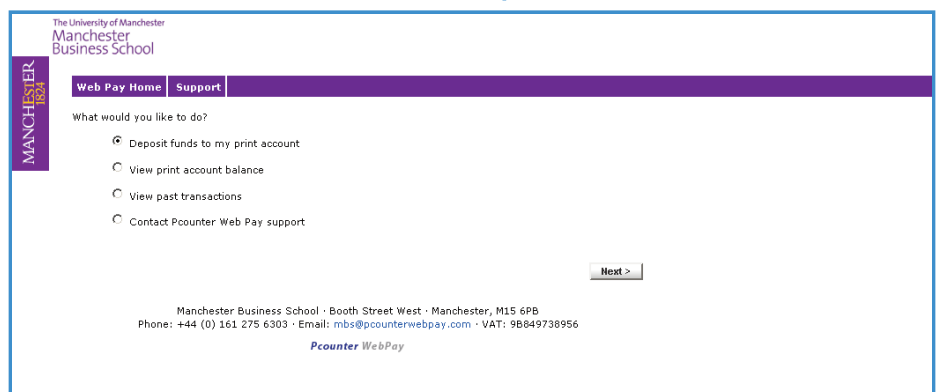
**Scalable, network-based print management software for:**

Education  
Public Sector  
Corporate  
Finance  
Professional

**Cut costs  
Eradicate waste  
Improve performance**

### Solution modules

Pcounter Core Solution  
Secure Pull Printing  
Copier Integration  
Biometric Integration  
Mobile Printing  
Reporting Suite  
Charging Systems  
Print Room Integration  
Local Printer Accounting  
Resource Planning  
Database Integration



The University of Manchester  
Manchester Business School

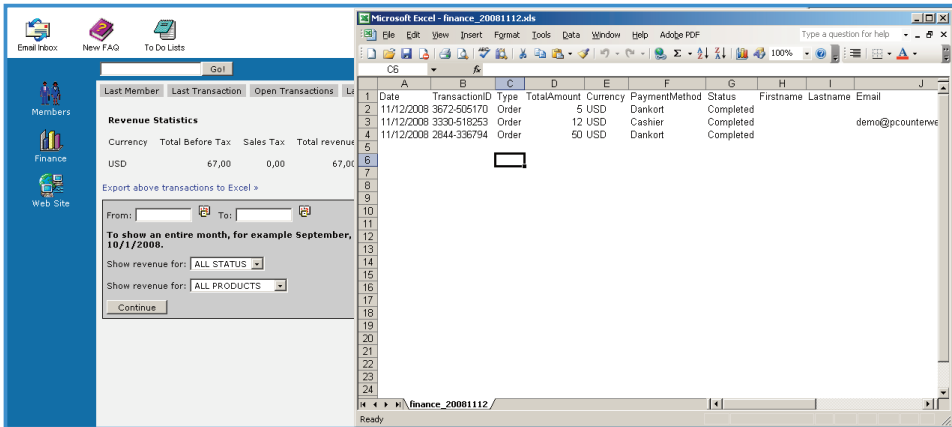
Web Pay Home Support

What would you like to do?

- Deposit funds to my print account
- View print account balance
- View past transactions
- Contact Pcounter Web Pay support

Next >

Manchester Business School · Booth Street West · Manchester, M15 6PB  
Phone: +44 (0) 161 275 6303 · Email: mbs@pcounterwebpay.com · VAT: 98849738956  
Pcounter WebPay



**AIT Ltd are UK based providers of print & copy software, ID cards and access control solutions.**

We pride ourselves on our levels of service working closely with our customers to provide optimised solutions that offer real value for money.

We provide flexible training, onsite consultancy and installation, telephone and web-based technical support, and deployment assistance.

If you can't find what you need please contact our solutions team outlining your requirements and we will do our best to assist you.

## TECHNICAL DATA

### Microsoft Windows

Windows 2000/2003 Server

Firewall must be opened for traffic from Pcounter Web Pay's servers (specific source IP address will be provided) to the Web servers

### Novell NetWare

Minimum Novell NetWare 5.1 with Novell NetWare Management Portal must be installed

Username and password must be provided for Novell NetWare Management Portal

The PWP Gateway must be installed on the same computer that hosts the Pcounter data server service.

For Pcounter for Netware, the PWP

The PWP Gateway requires Pcounter PRO 5.32 for NetWare or Pcounter PRO 2.52 for Windows, or newer.

Minimum computer specifications for PWP Gateway: MS Windows XP Pro, Windows 2000 (Pro or Server), Windows 2003 or later. 25 MB disk space. A CPU fast enough and sufficient RAM to run the OS efficiently.

**IMPORTANT:** For Pcounter Web Pay to successfully communicate with Pcounter, in addition to installing the PWP Gateway as described here, firewalls must be opened for communication between the Pcounter Web Pay's servers (specific source IP address is provided on the Pcounter Web Pay Setup Checklist) to the local Pcounter server.

## EVALUATION AVAILABLE

- Live demonstrations or webinar overviews can be arranged
- For more information please contact one of our solutions team:  
T: 0113 273 0300 E: solutions@ait.co.uk

**AIT Ltd** 2 Hawthorn Park, Coal Road, Leeds LS14 1PQ, UK

T: 0113 273 0300 F: 0113 273 0302

E: solutions@ait.co.uk W: www.ait.co.uk

Company registration number: 4380885

100215EAM01

