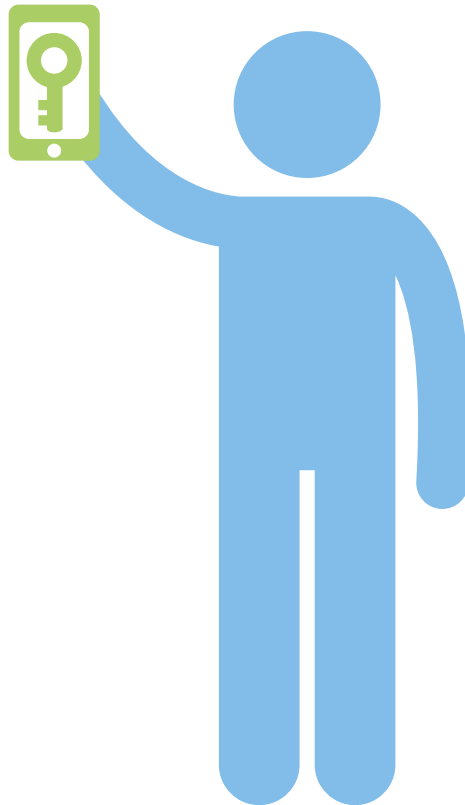


# MOBILE SOLUTIONS

Allowing smart phones to be integrated into your access control solution.



**Using the latest technology the JustIN mobile solution allows smartphones to be integrated into your access control solution.**

Using the latest technology the JustIN mobile solution allows smartphones to be integrated into your access control solution. The JustIN mobile key uses the phones BLE (Bluetooth low energy) to allow doors to be opened by a smartphone. Combined with the JustIN mSVN (mobile SALTO virtual network) and the phones NFC (near field communication), the smartphone also turns into an update terminal for credentials.

# MOBILE SOLUTIONS

## JustIN mobile Key

A JustIN mobile key uses BLE to communicate between the smartphone and electronic locks. The mobile key is sent 'over the air' (OTA) via the SPACE management software to the JustIN mobile key app on a registered/verified smartphone. The users will receive a message telling him he has a new key and which doors this will allow him to access. The user now only needs to present his phone to the relevant locks to gain access.

Data transmissions and the mobile key are encrypted and secured against cloning. As keys are sent OTA users can receive keys anytime and anywhere. The mobile key can be used alongside or replace RFID credentials. This is particularly useful if you have a mobile workforce.

## JustIN mobile SALTON virtual network (mSVN)

The JustIn mSVN has been developed by SALTO to enable access credentials to be updated via direct communication with the smartphone using the NFC interface.

This allows for direct, real-time information to be passed between the mobile phone and the management software. User rights can be amended, enabled or blocked and all without the user/smartphone having to pass a wired update point. The NFC smartphone serves as the update point just as an online reader usually does. All data transfer is encrypted and secured using MiFARE DESfire EV1 technology. This offers greater flexibility whilst retaining security.

## BENEFITS



### Improved User Experience

End users decide how to receive a key, either as a JustIN mobile key or as a physical credential such as an ID card. Mobile keys increase flexibility so users can receive keys online anywhere/anytime.



### Improved Facility Management

Minimises the expense and hassle of lost keys. User interactions are improved to provide a value add service that extends beyond the simple processing and issuing of keys.



### Real-Time Updates

Credentials automatically update in real-time allowing dynamic access control policies to be put in place which can include features such as daily re-validation for high security areas whereby a new key is issued every day or every shift.